

Drains ,Manhole Covers and Inspection Covers by the Colchester foundries. August 2018.

Bennell & Co

Bennell & Co Greenstead Road 1870 – 1899.



Bennell diamond pattern inspection cover



Bennell “nut” pattern inspection cov



Bennell Colchester drain.

Catchpool, Stanard & Stanford & Co

Catchpool, Stanard & Stanford & Co 1872 – 1874 when the name was possibly shortened to Stanford & Co operated from the High Street foundry.



A.G.Mumford & Co

A.G.Mumford & Co 1872 – 1933 operated from the Culver Street foundry.



Stanford & Co

Stanford & Co 1889- 1920 (but possibly from 1874)



Stanford “nut” pattern inspection cover



A small Stanford “nut” cover.





A standard Stanford inspection cover Stanford manhole cover.

F.W.Brackett & Co Ltd

F.W. Brackett & Co Ltd started in 1899 in a disused stable in Hawkins Road with three employees. Then moved into the vacant Bennell foundry in Greenstead Road and developed a successful engineering business alongside a general casting activity.

In 1967 the company was taken over by the Hawker Siddeley group and later ownership became known as Ovivo which they trade under today . A long tradition in the water purification industry.



F.W.Brackett drain



Kerb drain.



F.W.Brackett & Co hinged drain.



F.W.Brackett inspection cover



Manhole cover

C.E.Schlimper

C.E.Schlimper operated from the Abbeygate foundry for only two years around 1902. There are a very few lamp posts bearing his name plus some manhole covers.





The manhole covers with the original surrounding sets do have an attractive Victorian look still.

Truslove & Co

Truslove & Co. 1919 – 1933. They operated from premises in St Peter's Street in Brown's old silk mill. Apart from general casting they were well known for a range of pumps. When they closed the name and range were taken over by the St Botolph's Engineering Works in Magdalen Street (1936 – 1967). Apart from the standard Colchester lamp post they cast drains and manhole covers.



Truslove manhole covers with name lower and with name in the upper part of the casting.



Again two different castings with name lowerand name upper .

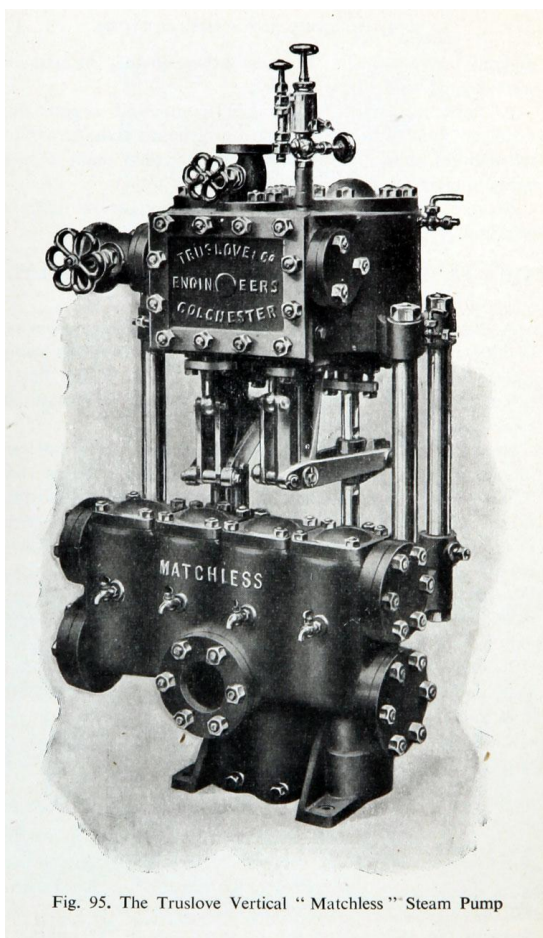


Fig. 95. The Truslove Vertical "Matchless" Steam Pump

"TRUSLOVE"
PUMPS
 SOLE MANUFACTURERS

- ★ "WONDER" Rotary
- ★ "MATCHLESS" Duplex
- ★ "VICTORY" Simplex
- ★ "TRUSTY" Donkey
- ★ "BULLDOG" Double acting

Overhaul and repairs of MUMFORD Pumps carried out

ST. BOTOLPH'S
ENGINEERING WORKS
 LIMITED

Magdalen Street, Colchester, England
 Telephone : COLCHESTER 2620
 Telegraphic Address: "PUMP, COLCHESTER"

A Truslove Matchless pump

1957 Advert for Truslove pumps and repair of Mumford's.

As well as the named foundry manhole covers there are several where the names have worn away from use but also some that only marked “ Colchester “. There are also those that I list as ring drains.



A Colchester manhole cover



Name polished away from use or from design ?



A ring drain as found all over the Borough but not usually with the granite sets. Unknown maker.